

Powers Design Assist[®]

Real-Time Anchor Design Software

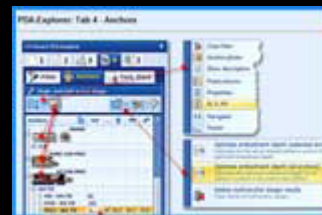
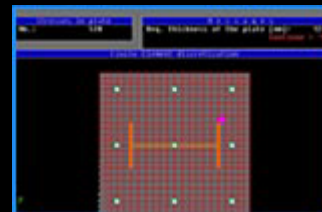
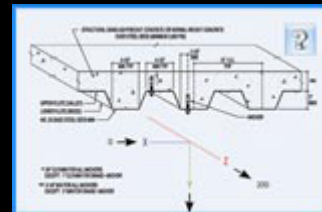
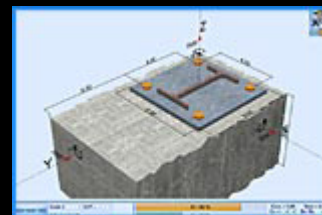
ACI 318
ETAG

PDA

VERSION 2.2
FREE!
UPGRADE &
DOWNLOAD



- Existing users of PDA 2.1 software, simply start PDA 2.1 and click the **LiveUpdate NEW!** button to upgrade to PDA 2.2 today.
- For new users of PDA, a FREE download is available at www.powersdesignassist.com
- Now includes ACI 318-11 design provisions for mechanical, adhesive and cast-in-place anchors
- Includes new load wizard tool for combining ACI load combinations (ACI 318-11)
- Added Wood-Knocker and Bang-It concrete inserts and approval (ACI), ESR-3657
- Updated adhesive anchor data and approvals for 2012 IBC (ACI 318-11)
- Dynamic GUI and real-time calculation results
- Updated drawings and product images
- Printout offers detailed output and summary page
- Display and print in imperial or metric units
- Design optimization tools
- Multi-language support (12 languages active)



Contact us for a free demonstration!
http://www.powers.com/ae_training/



Powers Design Assist
PDA Anchor Design Software
www.powersdesignassist.com

Powers
FASTENING INNOVATIONS

Powers Fasteners • 701 E. Joppa Road • Towson, MD 21286 • (800) 524-3244
email: info@powers.com • www.powers.com